

Date: \_\_\_\_\_ Catalog: No: \_\_\_\_\_

Prepared By: \_\_\_\_\_ Project: \_\_\_\_\_



## ALUMINUM ROUND STRAIGHT POLES

Unite is proud to offer a wide range of electro-welded ASTM-A500 Grade C steel poles. All of Unite's poles designed and manufactured in the USA and available to ship in as little as 5 days from our convenient location in the midwest.



### ORDERING INFORMATION

Example: UPRSSAA-20 -40-40-D-AB-SB-FP-MB-D1

Pole Series	Height	Base OD	TOP OD	Thickness	Anchor Bolts	Base	Finish	Finish	Mounting
UP-RSSAA	8'	40 = 4"	40 = 4"	C = 0.125"	AB = Incl.	SB Standard Base	AN Anodized	DB Dark Bronze	<b>Drill Mounting (Incl Cap)</b> D1 Single D2 2 @180 Deg D4 4 @ 90 Deg D5 2 @ 90 Deg D6 3 @ 90 Deg  <b>Tenon Mounting</b> P1 4" OD x 5" Long Tenon P2 2.38" OD x 4" Long Tenon P3 3.5" OD x 6" Long Tenon P4 4" OD x 6" Long Tenon P5 2.88" OD x 4" Long Tenon P6 2.88" OD x 5" Long Tenon P7 2.38" OD x 5" Long Tenon PQ 2.38" OD x 12" Long Tenon PD 3" OD x 3" Long Tenon P9 Custom Size Tenon  <b>Other Options</b> PC Cap Only No Drilling PL Open Top No Drilling+
	10'	50 = 5"	50 = 5"	D = 0.188"	LAB = Not Incl.	CB Custom Base	FP Finish Painted	MB Medium Bronze	
	12'	60 = 6"	60 = 6"	E = 0.250"				LG Light Gray	
	13'							DG Dark Green	
	14'							SG Slate Gray	
	15'							BK Black	
	16'							WH White	
	17'							SC Custom	
	17' 6"							NA Natural Alum Paint	
	18'							SA Satin Silver Anod.	
	20'							BA Black Anodized	
	22'								
	22' 6"								
	23'								
	24'								
	25'								
	26'								
	27'								
28'									
30'									

### Optional Accessory Information

Please contact Unite Ltg for specific part numbers for accessories as options vary greatly dependant upon choices made above. Unite will be pleased to provide detail on all accessories ordered.

#### Description

- SPL - Special Cut Length (please specify)
- VDA - Internal Vibration Dampener, Factory Installed
- VDF - Internal Vibration Dampener, Field Installable
- PXDX - Side Spill + Tenon w/Additional Hand Hole
- BCSPCL - Special Base Plate to Match Existing Bolt Circle  
(Will require Special Base Cover)
- HHU - Additional Unreinforced Hand Hole w/Cover Assembly
- HHR - Additional Reinforced Hand Hole w/ Cover Assembly
- FSST - Festoon Provision, Electrical By Others
- CPL - NPT Pipe Coupling

#### Description

- STAMP - Engineering Services, Signed and Sealed Calcs
- STAMPCA - Engineering Services, CA Signed and Sealed Calcs
- PRE063 - Pre-Ship Anchor Bolts 0.625" x 1.6" x 2"
- PRE075 - Pre-Ship Anchor Bolts 0.75" x 1.7" x 2"
- PRE100 - Pre-Ship Anchor Bolts 1" x 3.6" x 4"

## FEATURES & SPECIFICATIONS

### Pole Shaft

- The pole shaft is extruded from seamless 6063 T6 aluminum

### Pole Top

- A removable top cap is provided for poles receiving drilling patterns for the side-mounted luminaire arm assemblies. Other pole top options include Tenon Top, Top Cap Only or Open Top which is typical when the pole top diameter matches the necessary slip fit dimensions.

### Hand Hole

- 2" x 4" oval hand hole and grounding provision are provided (dimensions are nominal). Cover and cover attachment hardware are also included.

### Anchor Base and Cover

- The anchor base is cast from 356 alloy aluminum and supplied with an aluminum two piece base cover.
- The completed pole assembly is heat treated to a T6 temper.
- Optional decorative base covers available as special order.

### Anchor Bolts

- Anchor bolts conform to ASTM F1554 Grade 55 and are provided with two hex nuts and two flat washers.
- Bolts have an "L" bend on one end and are galvanized a minimum of 12" on the threaded end.

### Hardware

- All structural fasteners are galvanized high strength carbon steel.
- All non structural fasteners are galvanized or zinc plated carbon steel or stainless steel.

### Design Criteria

- Standard EPA and weight values are based on Standard Commercial and AASHTO Criteria (with 3 second gust factor) for side and top mounted fixtures only.
- Satisfactory performance of light poles is dependent upon the pole being properly attached to a supporting foundation of adequate design.

### Pole Vibration Damper

- A pole vibration damper is recommended in open terrain areas of the country where low steady state winds are common.
- Non-tapered poles and lightly loaded poles are more susceptible to destructive vibration if a damper is not installed.

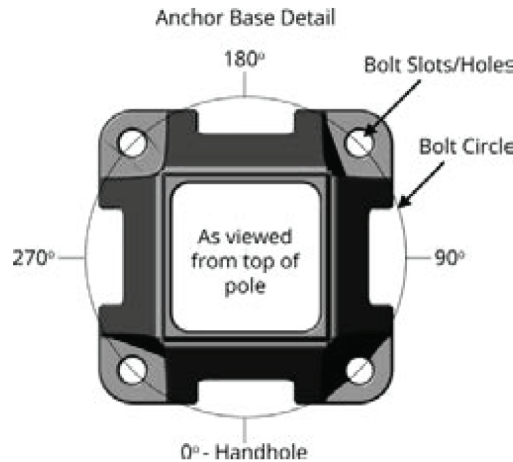
### Finishes

- Finishes include anodized or painted.
- When storing poles outside remove all wrapping immediately to prevent damage.
- Please consult factory for special finishing colors and fixture matching options.

### Determining The Luminaire/Pole Combination For Your Application:

- Select luminaire from luminaire ordering information
- Select bracket configuration if required
- Determine EPA value from luminaire/bracket EPA chart
- Select pole height
- Select MPH to match wind speed in the application area (See wind-speed maps).
- Confirm pole EPA equal to or exceeding value of luminaire/bracket EPA
- Consult factory for special wind load requirements and banner brackets

## BOLT CIRCLE



## DESIGN AND DIMENSIONAL INFORMATION

BASE MODEL	POLE DIMENSIONS					BASE PLATE		ANCHOR BOLTS	
	NOMINAL MOUNTING HEIGHT	BASE OD (IN)	TOP OD (IN)	WALL THK (IN)	STRUCTURE WEIGHT (LBS)	BOLT CIRCLE DIA (IN)	SQ (IN) x THK (IN)	DIA x LENGTH x HOOK (IN)	PROJECTION (IN)
NP-RSAA-08-4040-C	8'-0"	4	4	0.125	36	9.25	8.625 x 8.625 x 0.75	0.625 x 16.00 x 2.00	2.75
NP-RSAA-10-4040-C	10'-0"	4	4	0.125	39	9.25	8.625 x 8.625 x 0.75	0.625 x 16.00 x 2.00	2.75
NP-RSAA-12-4040-C	12'-0"	4	4	0.125	43	9.25	8.625 x 8.625 x 0.75	0.625 x 16.00 x 2.00	2.75
NP-RSAA-14-4040-C	14'-0"	4	4	0.125	47	9.25	8.625 x 8.625 x 0.75	0.625 x 16.00 x 2.00	2.75
NP-RSAA-15-4040-C	15'-0"	4	4	0.125	49	9.25	8.625 x 8.625 x 0.75	0.625 x 16.00 x 2.00	2.75
NP-RSAA-15-4040-D	15'-0"	4	4	0.188	63	9.25	8.625 x 8.625 x 0.75	0.75 x 17.00 x 2.00	2.75
NP-RSAA-15-5050-D	15'-0"	5	5	0.188	72	8.375 - 10.375	10.25 x 10.25 x 0.875	0.75 x 17.00 x 2.00	3.5
NP-RSAA-16-4040-C	16'-0"	4	4	0.125	50	9.25	8.625 x 8.625 x 0.75	0.625 x 16.00 x 2.00	2.75
NP-RSAA-16-4040-D	16'-0"	4	4	0.188	65	9.25	8.625 x 8.625 x 0.75	0.75 x 17.00 x 2.00	2.75
NP-RSAA-16-5050-D	16'-0"	5	5	0.188	75	8.375 - 10.375	10.25 x 10.25 x 0.875	0.75 x 17.00 x 2.00	3.5
NP-RSAA-18-4040-D	18'-0"	4	4	0.188	71	9.25	8.625 x 8.625 x 0.75	0.75 x 17.00 x 2.00	2.75
NP-RSAA-18-4040-E	18'-0"	4	4	0.250	87	9.25	8.625 x 8.625 x 0.75	0.75 x 17.00 x 2.00	2.75
NP-RSAA-18-5050-D	18'-0"	5	5	0.188	82	8.375 - 10.375	10.25 x 10.25 x 0.875	0.75 x 17.00 x 2.00	3.5
NP-RSAA-20-4040-D	20'-0"	4	4	0.188	76	9.25	8.625 x 8.625 x 0.75	0.75 x 17.00 x 2.00	2.75
NP-RSAA-20-4040-E	20'-0"	4	4	0.250	94	9.25	8.625 x 8.625 x 0.75	0.75 x 17.00 x 2.00	2.75
NP-RSAA-20-5050-D	20'-0"	5	5	0.188	89	8.375 - 10.375	10.25 x 10.25 x 0.875	0.75 x 17.00 x 2.00	3.5
NP-RSAA-20-5050-E	20'-0"	5	5	0.250	111	8.375 - 10.375	10.25 x 10.25 x 0.875	0.75 x 17.00 x 2.00	3.5
NP-RSAA-20-6060-D	20'-0"	6	6	0.188	104	9.625 - 11.375	11 x 11 x 1	1.00 x 36.00 x 4.00	3.5
NP-RSAA-20-6060-E	20'-0"	6	6	0.250	131	9.625 - 11.375	11 x 11 x 1	1.00 x 36.00 x 4.00	3.5
NP-RSAA-22-5050-E	22'-0"	5	5	0.250	120	8.375 - 10.375	10.25 x 10.25 x 0.875	0.75 x 17.00 x 2.00	3.5
NP-RSAA-22-6060-D	22'-0"	6	6	0.188	112	9.625 - 11.375	11 x 11 x 1	1.00 x 36.00 x 4.00	3.5
NP-RSAA-22-6060-E	22'-0"	6	6	0.250	142	9.625 - 11.375	11 x 11 x 1	1.00 x 36.00 x 4.00	3.5
NP-RSAA-24-5050-E +	24'-0"	5	5	0.250	129	8.375 - 10.375	10.25 x 10.25 x 0.875	0.75 x 17.00 x 2.00	3.5
NP-RSAA-24-6060-D	24'-0"	6	6	0.188	120	9.625 - 11.375	11 x 11 x 1	1.00 x 36.00 x 4.00	3.5
NP-RSAA-24-6060-E	24'-0"	6	6	0.250	153	9.625 - 11.375	11 x 11 x 1	1.00 x 36.00 x 4.00	3.5
NP-RSAA-25-5050-E +	25'-0"	5	5	0.250	133	8.375 - 10.375	10.25 x 10.25 x 0.875	0.75 x 17.00 x 2.00	3.5
NP-RSAA-25-6060-D	25'-0"	6	6	0.188	124	9.625 - 11.375	11 x 11 x 1	1.00 x 36.00 x 4.00	3.5
NP-RSAA-25-6060-E	25'-0"	6	6	0.250	158	9.625 - 11.375	11 x 11 x 1	1.00 x 36.00 x 4.00	3.5
NP-RSAA-26-6060-D +	26'-0"	6	6	0.188	129	9.625 - 11.375	11 x 11 x 1	1.00 x 36.00 x 4.00	3.5
NP-RSAA-26-6060-E +	26'-0"	6	6	0.250	163	9.625 - 11.375	11 x 11 x 1	1.00 x 36.00 x 4.00	3.5
NP-RSAA-28-6060-D +	28'-0"	6	6	0.188	137	9.625 - 11.375	11 x 11 x 1	1.00 x 36.00 x 4.00	3.5
NP-RSAA-28-6060-E +	28'-0"	6	6	0.250	174	9.625 - 11.375	11 x 11 x 1	1.00 x 36.00 x 4.00	3.5
NP-RSAA-30-6060-D +	30'-0"	6	6	0.188	143	9.625 - 11.375	11 x 11 x 1	1.00 x 36.00 x 4.00	3.5
NP-RSAA-30-6060-E +	30'-0"	6	6	0.250	182	9.625 - 11.375	11 x 11 x 1	1.00 x 36.00 x 4.00	3.5



## EPA LOAD INFORMATION

BASE MODEL	80 MPH w/3sec Gust		90 MPH w/3sec Gust		100 MPH w/3sec Gust		110 MPH w/3sec Gust		120 MPH w/3sec Gust	
	MAX EPA (SQ FT)	MAX WEIGHT (LBS)	MAX EPA (SQ FT)	MAX WEIGHT (LBS)	MAX EPA (SQ FT)	MAX WEIGHT (LBS)	MAX EPA (SQ FT)	MAX WEIGHT (LBS)	MAX EPA (SQ FT)	MAX WEIGHT (LBS)
NP-RSAA-08-4040-C	12.7	100	9.7	100	7.5	100	6.6	100	5.3	100
NP-RSAA-10-4040-C	9.3	100	7.1	100	5.3	100	4.6	100	3.6	100
NP-RSAA-12-4040-C	7.2	100	5.2	100	3.8	100	3.2	100	2.3	100
NP-RSAA-14-4040-C	5.5	100	3.8	100	2.6	100	2	100	1.3	100
NP-RSAA-15-4040-C	4.8	100	3.2	100	2	100	1.6	100	0.9	100
NP-RSAA-15-4040-D	8.4	100	6.1	100	4.4	100	3.7	100	2.6	100
NP-RSAA-15-5050-D	14.9	125	11	125	8.3	125	7.1	125	5.4	125
NP-RSAA-16-4040-C	4.1	100	2.6	100	1.6	100	1.1	100	0.4	100
NP-RSAA-16-4040-D	7.5	100	5.3	100	3.8	100	3.1	100	2.1	100
NP-RSAA-16-5050-D	13.5	125	9.9	125	7.3	125	6.2	125	4.6	125
NP-RSAA-18-4040-D	5.8	100	3.9	100	2.5	100	1.9	100	1.1	100
NP-RSAA-18-4040-E	8.5	100	6	100	4.3	100	3.5	100	2.4	100
NP-RSAA-18-5050-D	10.9	125	7.7	125	5.4	125	4.5	125	3.1	125
NP-RSAA-20-4040-D	4.4	100	2.7	100	1.5	100	0.9	100	N/A	N/A
NP-RSAA-20-4040-E	6.7	100	4.5	100	3	100	2.3	100	1.3	100
NP-RSAA-20-5050-D	8.6	125	5.8	125	3.8	125	3	125	1.8	125
NP-RSAA-20-5050-E	12.6	125	9	125	6.4	125	5.3	125	3.7	125
NP-RSAA-20-6060-D	14.1	150	10	150	7	150	5.8	150	3.9	150
NP-RSAA-20-6060-E	20.1	150	14.7	150	10.9	150	9.2	150	6.9	150
NP-RSAA-22-5050-E	10.3	125	7	125	4.7	125	3.7	125	2.3	125
NP-RSAA-22-6060-D	11.4	150	7.7	150	5.1	150	4	150	2.4	150
NP-RSAA-22-6060-E	16.8	150	12	150	8.5	150	7.1	150	5	150
NP-RSAA-24-5050-E +	8.3	125	5.4	125	3.3	125	2.4	125	1.1	125
NP-RSAA-24-6060-D	9.1	150	5.8	150	3.4	150	2.4	150	1	150
NP-RSAA-24-6060-E	13.9	150	9.6	150	6.5	150	5.2	150	3.3	150
NP-RSAA-25-5050-E +	7.4	125	4.6	125	2.6	125	1.8	125	0.6	125
NP-RSAA-25-6060-D	8.1	150	4.9	150	2.7	150	1.7	150	N/A	N/A
NP-RSAA-25-6060-E	12.7	150	8.6	150	5.6	150	4.3	150	2.5	150
NP-RSAA-26-6060-D +	7.1	150	4.1	150	2	150	1	150	N/A	N/A
NP-RSAA-26-6060-E +	11.5	150	7.6	150	4.8	150	3.6	150	1.8	150
NP-RSAA-28-6060-D +	5.3	150	2.6	150	0.6	150	N/A	N/A	N/A	N/A
NP-RSAA-28-6060-E +	9.3	150	5.8	150	3.2	150	2.1	150	0.5	150
NP-RSAA-30-6060-D +	4.1	150	1.5	150	N/A	N/A	N/A	N/A	N/A	N/A
NP-RSAA-30-6060-E +	7.9	150	4.5	150	2.1	150	1.1	150	N/A	N/A